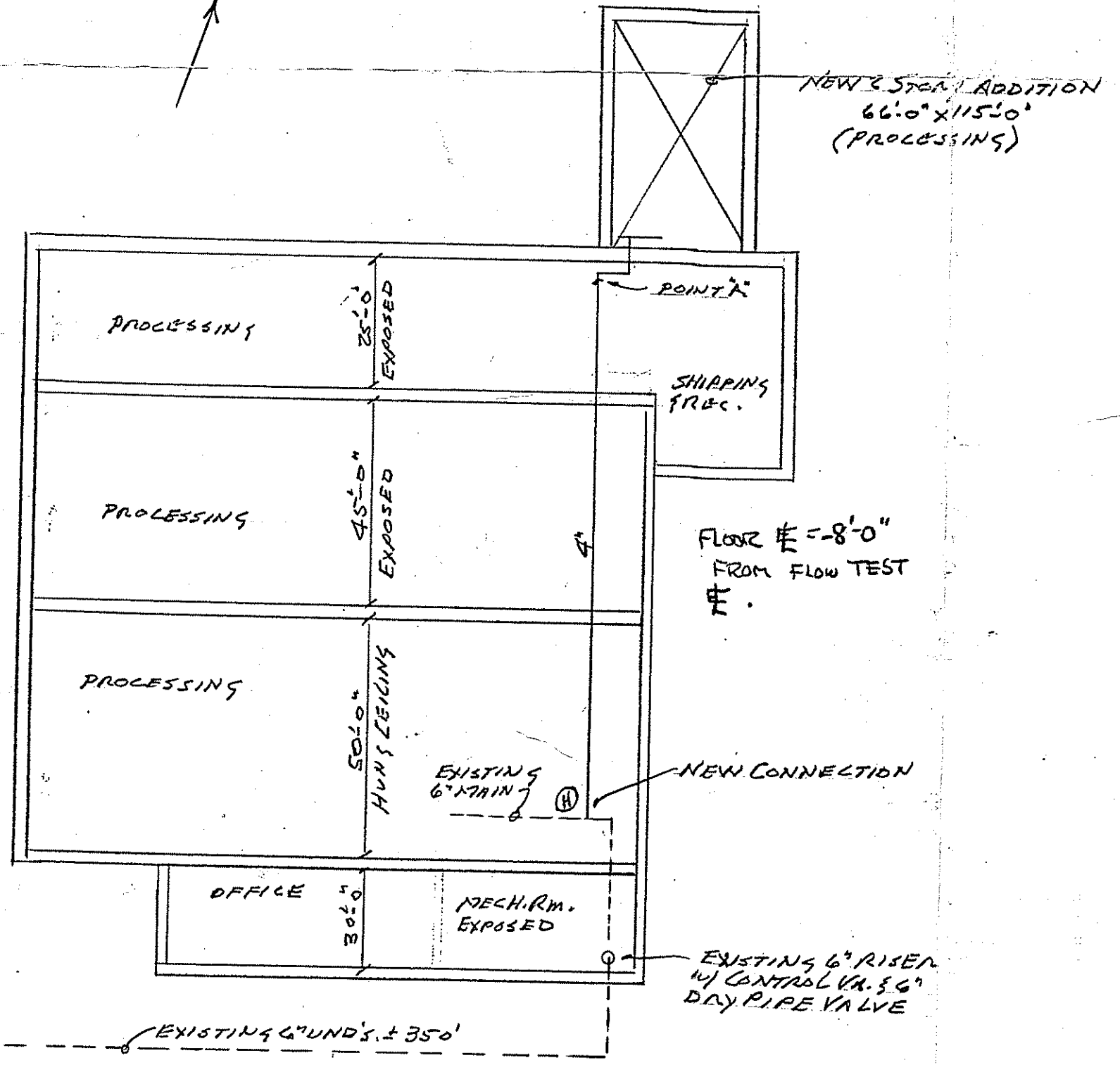
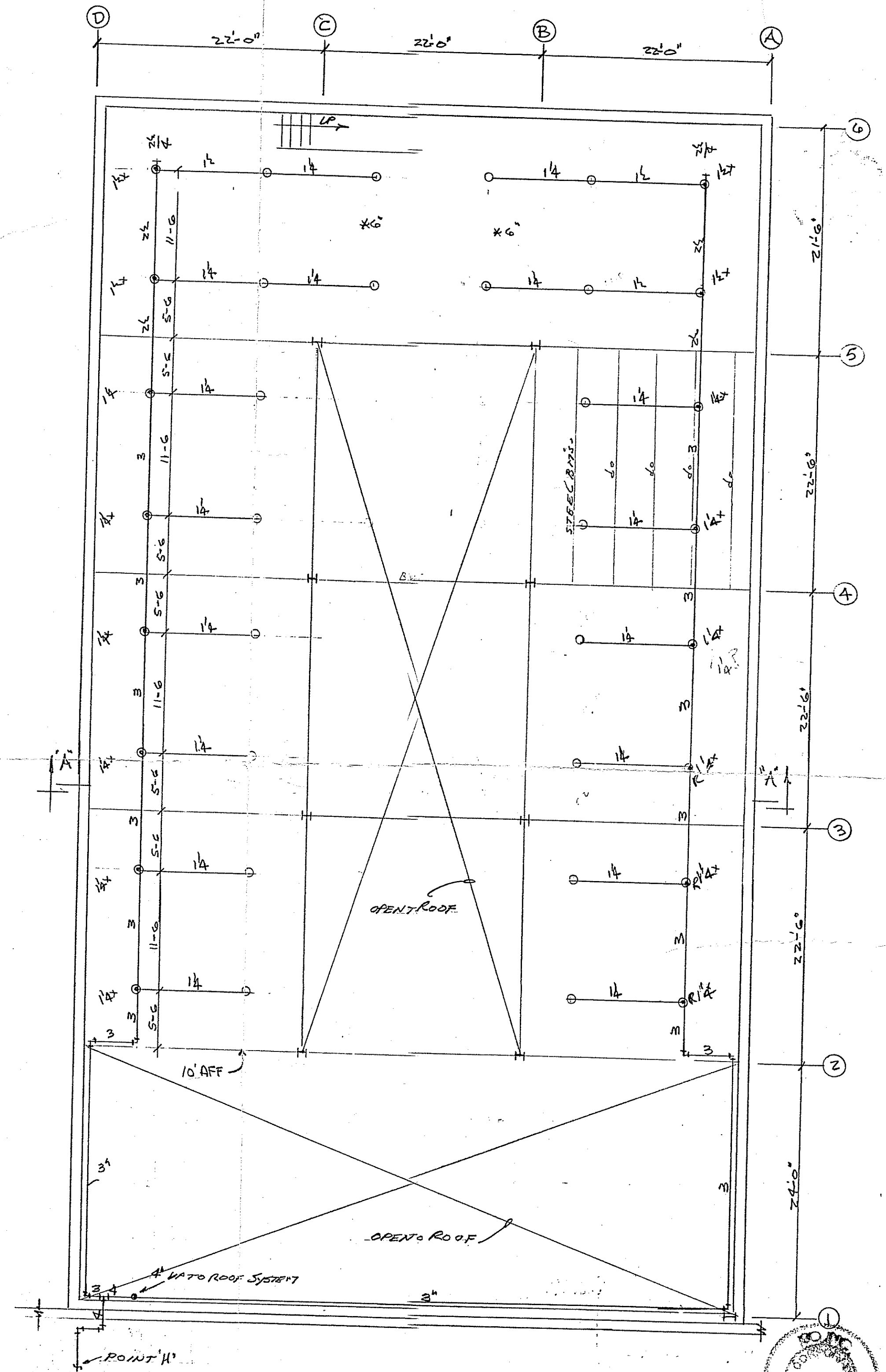
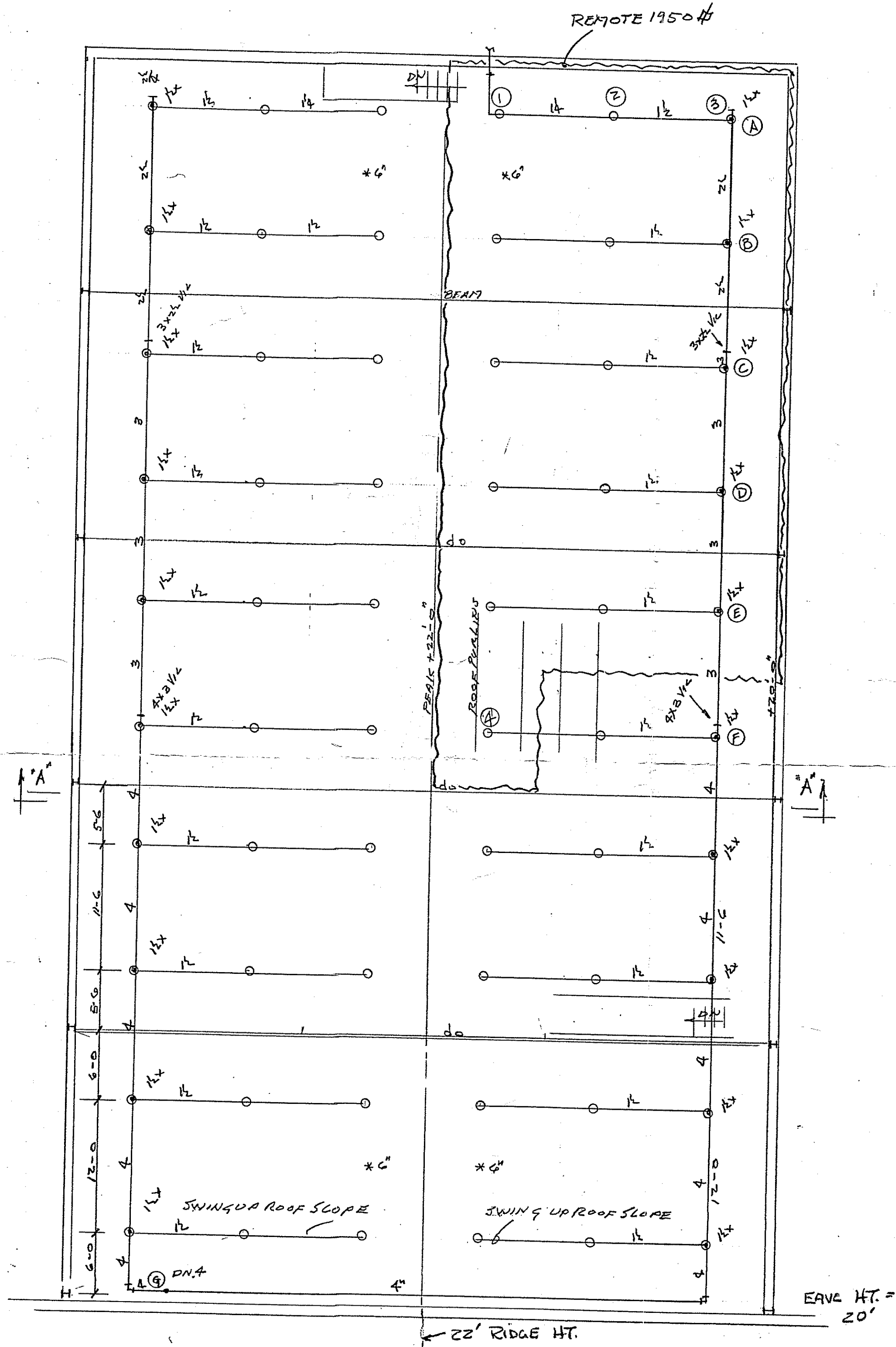
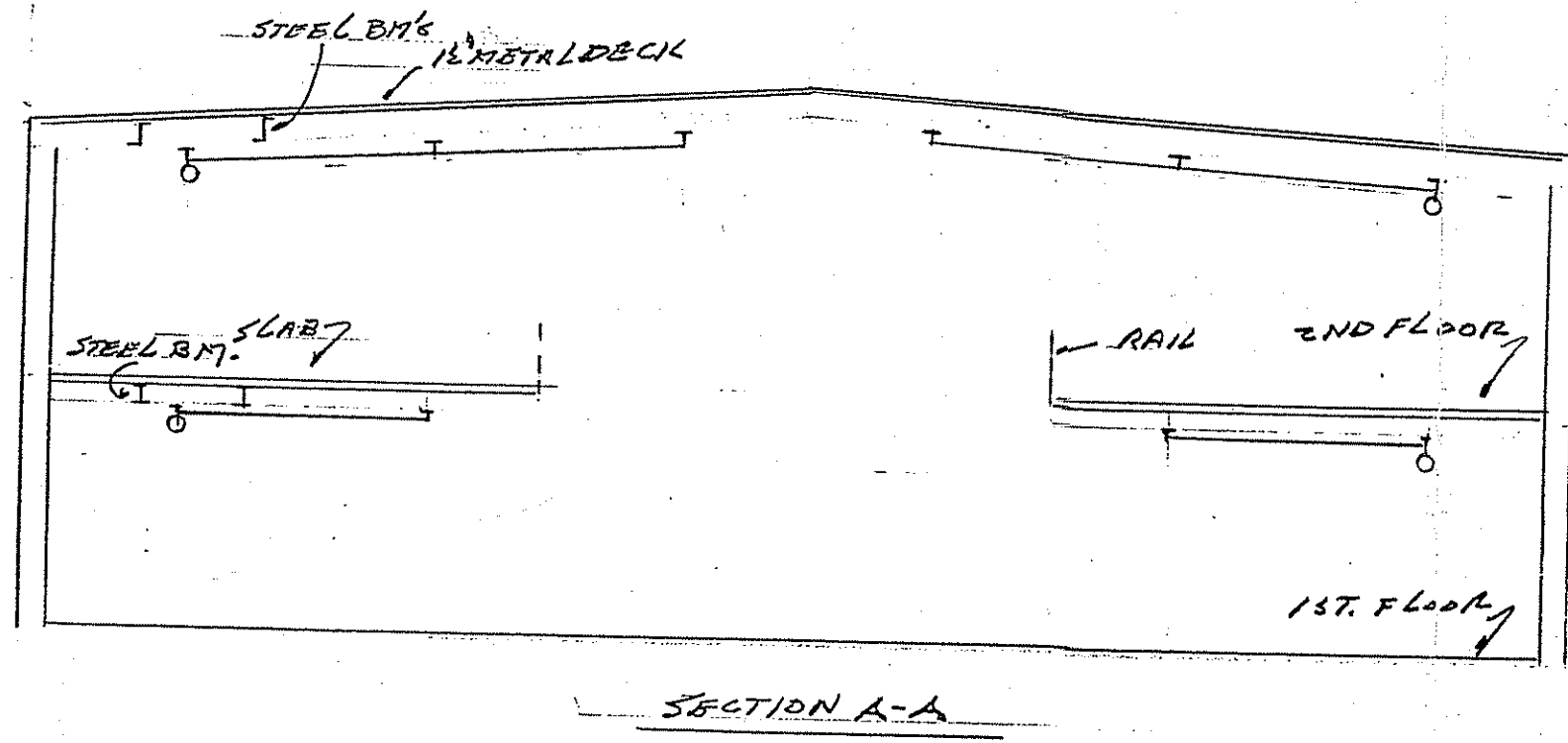


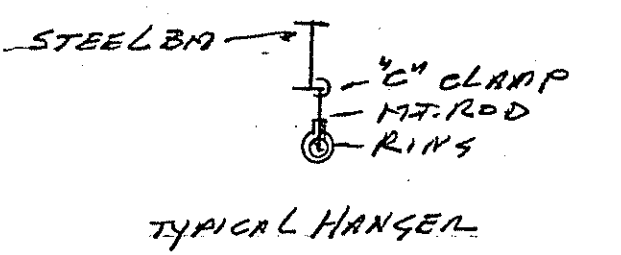
HYDRAULIC CALCULATIONS FOR
 ORD. GR. 1
 THIS SYSTEM IS CALCULATED TO PROVIDE A
 DENSITY OF .15 G.P.M. OVER THE
 MOST REMOTE 9750 SQ. FT.
 WITH 18.11 G.P.M. AT 10.45 P.S.I.
 AT THE MOST REMOTE SPRINKLER. THIS
 SYSTEM WILL HAVE A DEMAND OF 34.14
 G.P.M. AT 55.3 P.S.I. AT THE TEST
 LOCATION



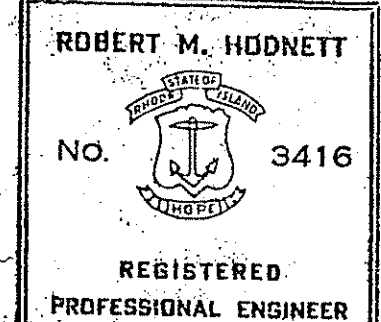
WATER DATA:
 STATIC 82 PSI
 RESIDUAL 50 PSI
 FLOW 822 GPM.

KEY PLAN
 NO SCALE

MEZZANINE ROOF PLAN



NOTES:
 * DENOTES 6\"/>



Robert M. Hodnett
 QUICK RESPONSE GEM
 1700 DC A 1/2"-155°

FIRST FLOOR

Revision		
Revision		
Revision		
Revision		
TYPE OF SPRINKLERS	M.S.A. MARITIME SEAFOOD PROCESSORS INC.	
OUPRIGHT	96	2266 PAWTUCKET AVE EAST PROVIDENCE, R.I.
	SCALE: 1/8" = 1'-0"	SHEET NO.: 1 OF 1
	DATE: 12-26-02	CONTRACT: 2227
	STORY: NOTED	APPROVAL BY: I.S.O.
		AAA SPRINKLER CO. INC.
		271 DORIC AVE. • P.O. BOX 8679
		CRANSTON, RHODE ISLAND 02920